



RECONSTRUCTING SR 32

MARCH 2024

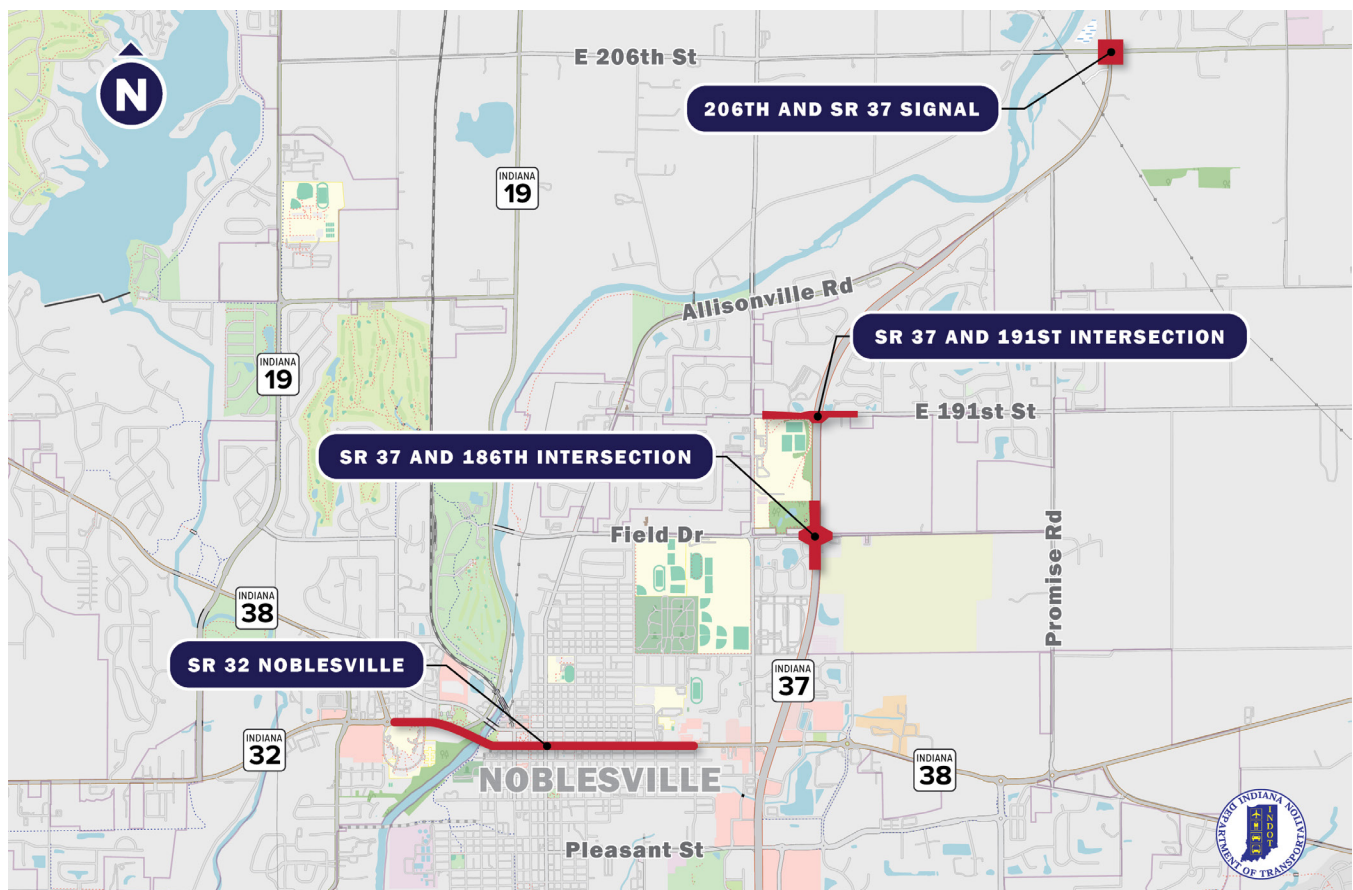
Welcome to the Reconstructing SR 32 newsletter.
The information is current based on the date it is printed (March 20, 2024).

Construction Beginning Next Month

Construction will begin on or after Monday, April 1 at 9pm for the Reconstructing SR 32 project. Crews will begin at the intersection of SR 32 and 16th Street. Phase 1 will be a full closure at 16th Street. Construction between 6th and 16th Streets will take place in April and continue through mid-July. The remaining construction will last until November 2024.

The project is broken into four phases with each phase lasting approximately 45 days, weather permitting. The phases are as follows:

- **Phase 1:** SR 32 at 16th Street Intersection (*April*)
- **Phase 2:** SR 32 from 9th Street to 14th Street (*late April - early June*)
- **Phase 3:** SR 32 from 6th Street to 9th Street (*June - July*)
- **Phase 4:** SR 32 from Lakeview Drive to 19th Street





RECONSTRUCTING SR 32

MARCH 2024

Detour Routes for Drivers and Pedestrians

With several local shops and restaurants near this project, maintaining driver and pedestrian access throughout construction is critical.

As part of our effort to maintain access to local businesses, 8th Street, 10th Street, and 16th Street will not be closed at the same time. Pedestrian access will also be maintained. Short-duration, one-way sidewalk closures may occur, but signage and barricades will help direct pedestrian traffic.

About Reconstructing SR 32

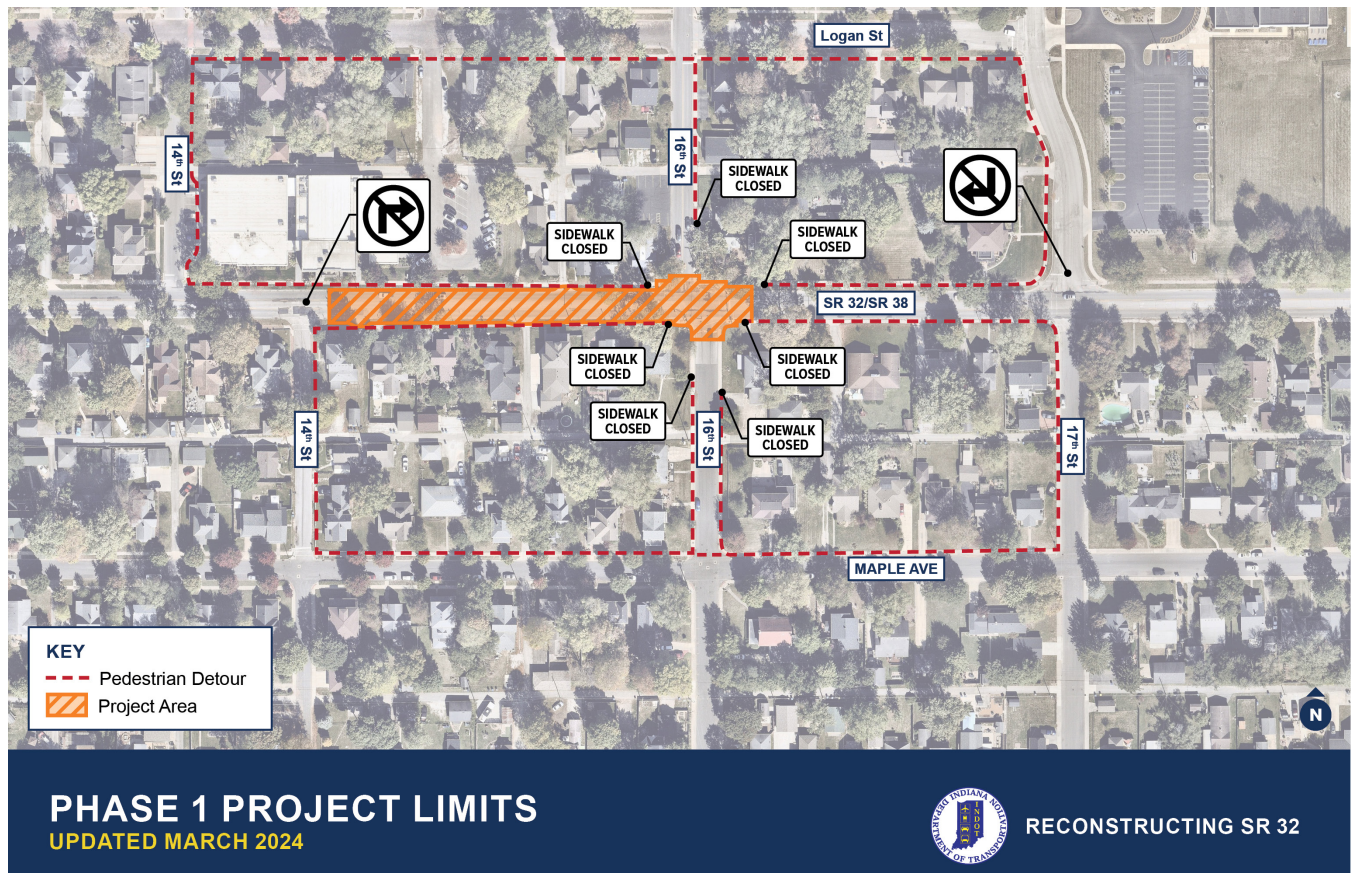
This project is necessary because the pavement on this section of SR 32 has reached the end of its useful life and must be replaced. In fact, when crews were assessing the layers beneath the pavement, some layers dated to the late 1800s.

Properly maintaining this infrastructure requires replacing this section of pavement, including addressing drainage issues. Part of the overall project includes intersection improvements along SR 37.

With several other road projects in construction at the same time, we are coordinating closely with our local partners and businesses to minimize public impact while preserving the historic downtown district of Noblesville.

Learn more at: www.reconstructingsr32.com/about

For more information on local Noblesville closures, visit www.noblesville.in.gov



The information is current based on the date it is printed (March 20, 2024). INDOT reminds drivers to consider worker safety by slowing down, using caution and avoiding distractions when traveling in and near work zones. All work is weather-dependent, and schedules are subject to change.