

Reconstructing State Road 32

Intersection Improvements on SR 37

February 9, 2024



Indiana Department of Transportation
East Central District

 [Reconstructing SR 32](#)  [@reconstructSR32](#)  [www.reconstructingSR32.com](#)



Introductions

Jennifer Beck

INDOT, Project Manager

Scott Sipes

INDOT, Area Manager

Kevin Worsley

INDOT, PE/PS

Jamie Stetzel

American Structurepoint, Design Consultant

Levi Michalke

American Structurepoint, Design Engineer



Purpose and Need



Renew the useful life of the pavement on SR 32



Preserve the beauty of Noblesville's Historic Districts



Minimize impacts to the Public and collaborate with our Partners



Invest in community accessibility, pedestrian crossings, and signals



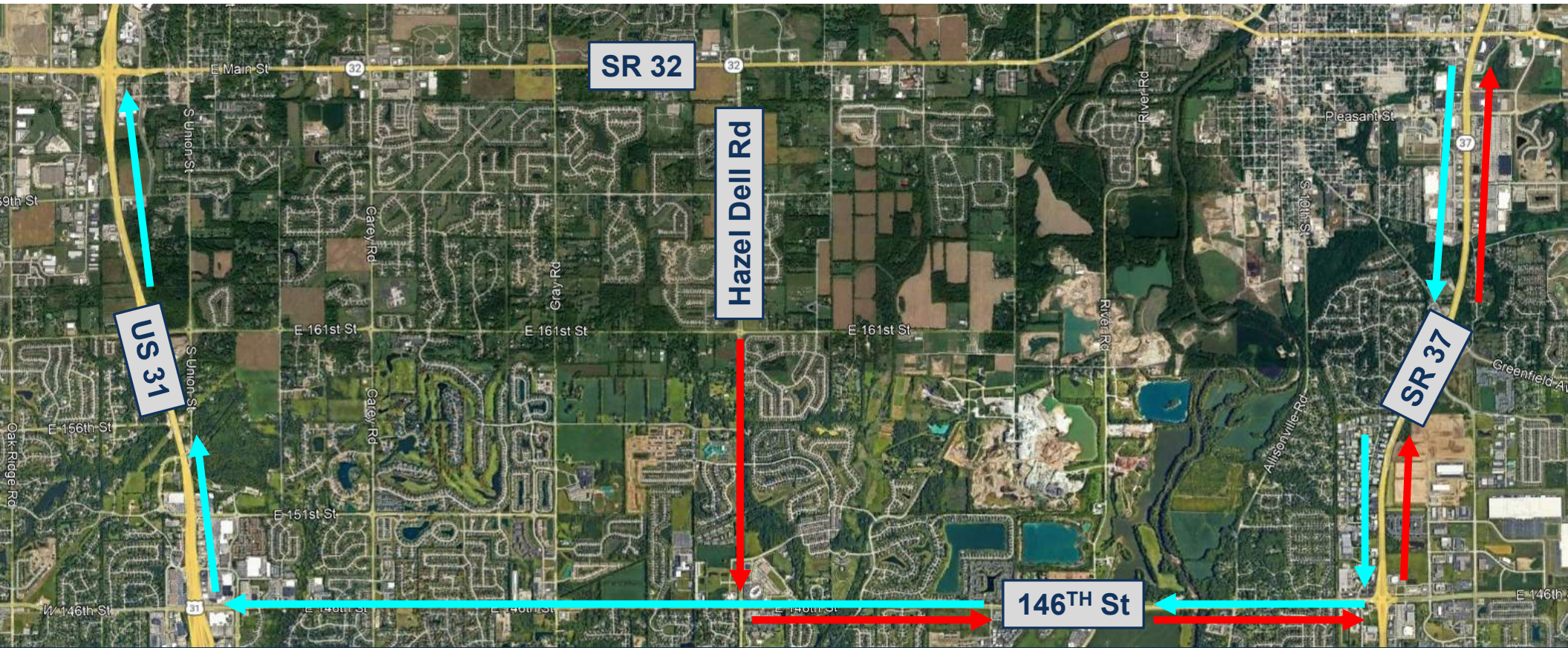
Project Limits



Indiana Department of Transportation
East Central District

[f](#) Reconstructing SR 32 [X](#) @reconstructSR32 [globe](#) www.reconstructingSR32.com

Construction Detour



Indiana Department of Transportation
East Central District

Reconstructing SR 32 @reconstructSR32 www.reconstructingSR32.com

Construction Schedule



- **Phase 1:** SR 32 at 16th Street Intersection
- **Phase 2:** SR 32 from 9th St to 14th St
- **Phase 3:** SR 32 from 6th St to 9th St
- **Phase 4:** SR 32 from Lakeview Dr to 19th St
- 8th Street, 10 Street, and 16th Street never closed at the same time
- Each Phase is approximately 30-45 days



www.noblesville.in.gov/department/division.php?structureid=294



Indiana Department of Transportation
East Central District

[f](#) Reconstructing SR 32 [X](#) @reconstructSR32 [globe](#) www.reconstructingSR32.com

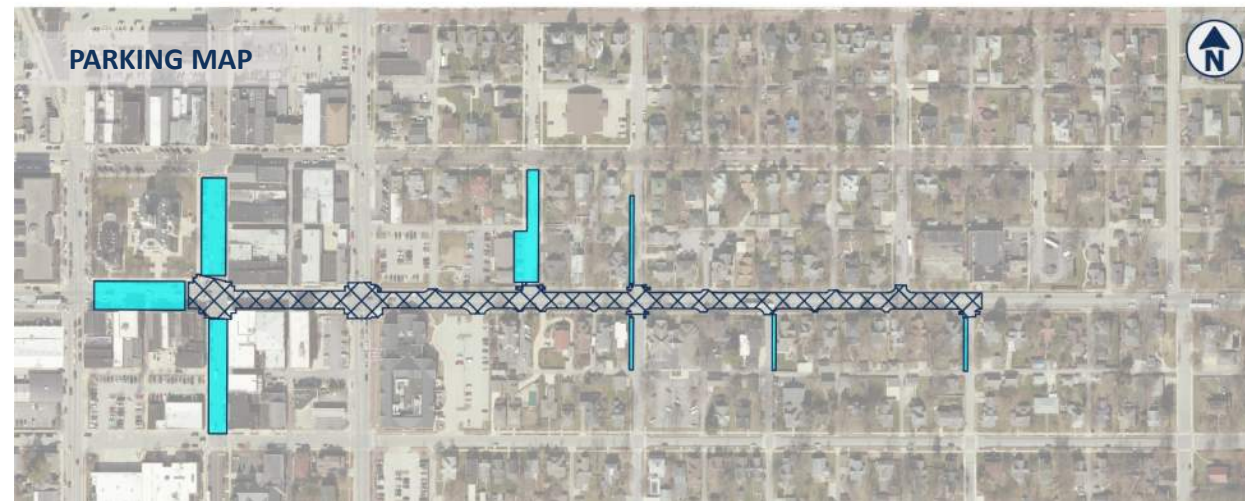
Construction Phasing

- Full Closure, Pavement Replacement, and Storm Sewer Reconstruction
- 14th St and 17th St Detours
- 16th St Parking open from Maple Ave
- Closure time in April



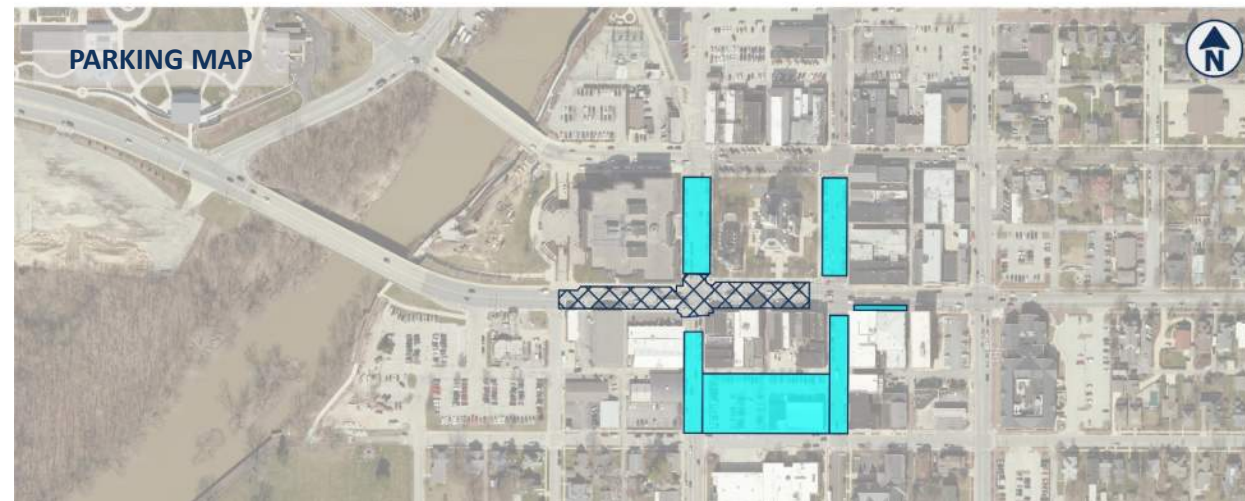
Construction Phasing

- Full Closure, Pavement Replacement, and Storm Sewer Reconstruction
- 8th St and 16th St Detours
- On-Street Parking accessed from Logan St and Maple Ave, Closed on SR 32
- Local Deliveries continue using Logan, Maple, Alleyways, and Side Streets
- Closure time Late April through early June



Construction Phasing

- Full Closure and Pavement Replacement between 6th and 9th St
- SR 19, 6th St, and 9th St Detours
- On-Street Parking on 8th St Open
- Levinson Parking Garage on Maple Ave
- Closure June to early July



Construction Phasing

- Pavement Resurfacing West of White River, Lakeview Drive to Bridge
- Pavement Resurfacing East of White River, 16th St to 19th St
- One-Lane Closures for mobile operations, lane shifts and signage



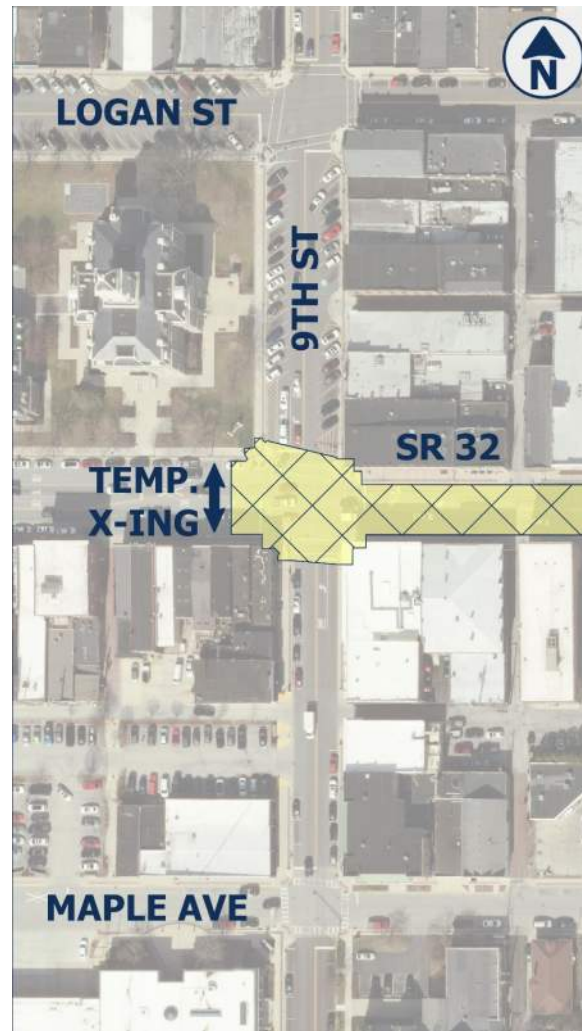
Street-Side Pedestrian Business Access

- Short Duration, One-Way Sidewalk Closures at Corners, Loop around Block
- Signage and ADA Barricades
- Direct Updates from INDOT Contractor, including Handouts and Website Notices
- Receive Regular Updates – www.reconstructingSR32.com



Cross-Street Pedestrian Business Access

- Phase 2: Temporary X-ing on West Side of 9th St, Barriers between work zone, crossing, and open parking
- Phase 3: Permanent X-ing at 9th St, Barriers between work zone, crossing, and 9th St traffic until roadway opened



Intersection Construction at SR 37 & 186th St.

- Restricted Crossing U-Turn Reconstruction along SR 37 (RCUT)
- SR 37 to remain Open, Down to One Lane Each Direction at times
- 186th St Closed, Detours Cumberland & Promise Rd



Intersection Construction at SR 37 & 191st St.

- Adding Left Turn Lane capacity to 191st and New Multi-Use Path crossing SR 37
- SR 37 to remain Open, Approach to 191st St Closed
- 191st St Closed, Detours Cumberland & Promise Rd



Indiana Department of Transportation
East Central District

 [Reconstructing SR 32](#)  [@reconstructSR32](#)  [www.reconstructingSR32.com](#)

Intersection Construction at SR 37 & 206th St.

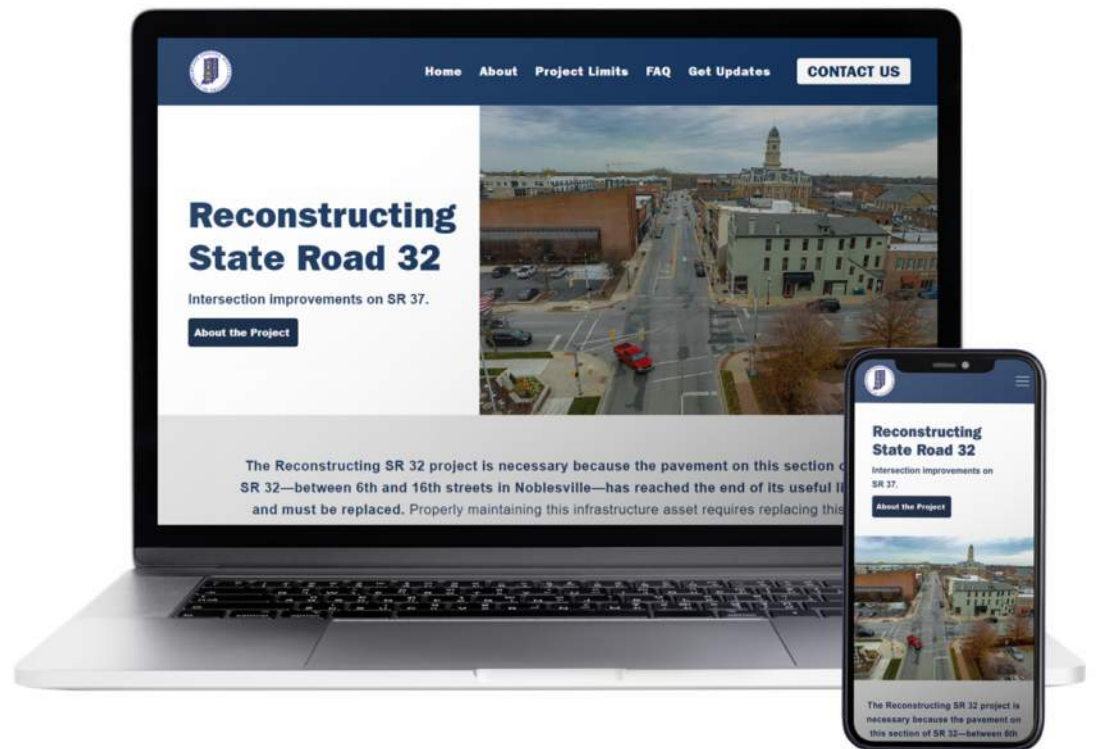
- Traffic Signal Modernization
- SR 37 to remain Open and 206th St to remain Open



Get Project Updates

Check out a Few resources to stay in touch on this project:

- Project Website
- Project Social Media
- Newsletters and Notices
- INDOT GovDelivery Email Updates



Questions, Contacts, and Helpful Links

- **INDOT Customer Service**
indot4u.com | 855-463-6848
Please reference “Reconstructing SR 32 Noblesville” in your message.
- **Project Website**
www.reconstructingSR32.com
- **INDOT GovDelivery Subscription**
secure.in.gov/indot/contact-indot/subscribe-to-indot-news/

The form contains the following fields and sections:

- First Name (Required)**: Text input field.
- Last Name (Required)**: Text input field.
- Email (Required)**: Text input field with placeholder "Valid email address".
- Phone number**: Text input field with placeholder "Phone number with area code in format of xxx-xxx-xxxx".
- Location of Concern (Required)**: Text input field with placeholder "Include road or route number".
- County (Required)**: Dropdown menu with placeholder "Include county where concern is located".
- Interstate or Highway Number**: Text input field with placeholder "Include nearest mile marker, interchange or landmark".
- Describe Your Concern (Required)**: Text area with placeholder "RECONSTRUCTION SR 32 NOBLESVILLE: Report your concerns or questions on the project. Tell us how we're doing".
- Security**: A checkbox labeled "I'm not a robot" and a reCAPTCHA widget.
- Submit**: A large green button.

